

# ART Newsletter

January 2016 issue

A.R.T. Association of Revolutionary Turners

email: [info@revolutionary-turners.com](mailto:info@revolutionary-turners.com)

website: <http://www.revolutionary-turners.com/>



## President's Letter February X, 2016

This Month's Topics are:

- ART equipment
- What would you, as a member, like to see the club to do this year?

ART Equipment: As you know we are trying to get a handle on the equipment ART has, its current condition as well as future needs. To that end Ralph Rumery has agreed to catalog all ART equipment at the February 20th Open Turn, Middlesex Community College in Bedford. It is important that ALL ART EQUIPMENT be brought to the event. This includes lathes, accessories, grinder and any video/computer equipment.

If you have club equipment and cannot make the meeting please call me 781-272-5012 and we will arrange to pick it up. Over and above taking inventory we will be using all the equipment at the Open Turn.

We're at a point where we have a decent bank account so we should be planning ways to use it. We don't pay rent now. The club patches we are thinking about will be around \$200 leaving us well over \$5,000. The main use for our savings has been inviting a professional turner to demonstrate and hold a "hands on" class. This would be over a weekend. Please look around the web and see if there is anyone you would like to recommend inviting.

If there is a turning video you would like us to get please ask. I can't think of any other use for funds but, we are all open for ideas.

Turn Safe  
John Flynn



Affiliated with the American Association of Woodturners (AAW) <http://www.woodturner.org/>

© 2016 Association of Revolutionary Turners

Next Meeting:  
**OPEN TURN**  
February 20th  
**NO meeting on the 18th**

9 am – 4 pm

A short meeting  
will be held at 10:00

Middlesex  
Community College  
**Student Study Cafeteria**  
Bedford Campus  
591 Springs Road,  
Bedford, MA 01730

— Details inside —

## Club Officers

John Flynn  
*President*

Darragh Cosgrave  
*Internal Vice President*

Mike Souter  
*External Vice President*

Mark Holden  
*Secretary, Treasurer*

Duncan Suss  
*Membership Director*

Ron Pouliot  
*Topsfield Coordinator*

Catherine Francis  
*Club Librarian*

John Earley  
*Supplies Coordinator*

Ralph Rumery,  
*Equipment Coordinator*

Ken Paciulan  
*Webmaster, Photographer*

## Safety First!

- Always wear a face shield !!
- Make sure your tail-stock is LOCKED before turning on the lathe!!!
- Never move the tool rest while the lathe is Spinning.
- When you have to chase your lathe around the room, you're turning speed is too high.

## Minutes, Jan. 21, 2015 Meeting

Mark Holden, ART Secretary

Attendance approximately 35, visitors 1

7:02 Meeting opened

New visitor: Kathy, new to turning, has taken some lessons from Donna Banfield.

John mentioned the club mentor list can be found on the ART website.

### Reports

\$5339 in funds

Membership Director: 30+ paid with many signing up right after this meeting (52 as of Jan 27th).

Supplies Coordinator: doing better than breaking even.

Internal VP: Ralph needs the video setup for his demo we found out Woodcraft is storing.

### New Business

Motion for 3 new lathe toolboxes — tabled to next meeting when we have them to assess needs.

Need to update the bi-laws (membership, where we meet and the amount of state sales tax collected) Suggested we reference “as recorded in the minutes” for the first two and to change the state sales tax percentage to “the current state sales tax” so as to eliminate the need to update the bi-laws in the future — once done an electronic copy will be sent to the webmaster to post on the club website.

### Announcements

Our Woodcraft “showcase Corner” will run longer.

Reminder that the Feb meeting will be held at the Open Turn and not at Woodcraft on the 3rd Thursday.

Empty Bowl donations, if you wish to participate bring your donations to the next meeting.

The Big E The Woodworking Show is Jan 22–24.

Arnold Arboretum show will happen again this fall, Oct 21–23. They want more Arboretum wood in the show this year and will coordinate access to their pile. Bobbi Tornheim offered to help John with this event.

Mark to bring in his green smock for potential club group purchase, Ralph mentioned that the AAW blue smock is not too expensive.

7:45 Meeting adjourned

Short break followed by Show & Tell, then Wood Swap drawings

### Club Officers Elections

(held at the end of this meeting)

All nominations were seconded and votes were unanimous

President: John Flynn

Internal Vice President: Darragh Cosgrave

External Vice President: Mike Souter in abstentia

Secretary: Mark Holden

Treasurer: Mark Holden

Membership Director: Duncan Suss

### Appointed Positions (as of this meeting)

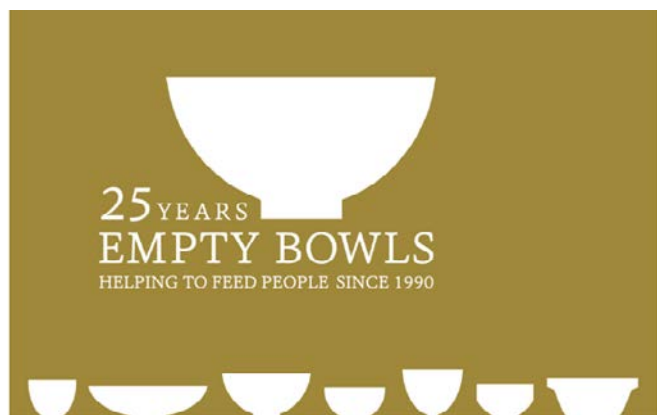
Topsfield Coordinator: Ron Pouliot

Club Librarian: Catherine Francis

Supplies Coordinator: John Earley

Equipment Coordinator: Ralph Rumery

Webmaster, Club Photographer: Ken Paciulan



## Donations for Empty Bowls Project

Gary Kaplan has invited ART members to donate to this fundraising event to help end hunger.

It is an international grassroots effort to raise both money and awareness in the fight to end hunger. **Please bring your wooden bowl(s) donations to the February open turn.**

Small bowls will be event attendees gifts, large bowls may end up in an auction!

**Attention Members! You can now pay your dues for 2016 online at:**

<https://squareup.com/market/revolutionary-turners>

---

# CLUB EVENT

## ART OPEN TURN

### Saturday February 20th, 2016

*Middlesex Community College  
Student Study Cafeteria, Bedford Campus  
591 Springs Road, Bedford, MA 01730*

This is an annual event that includes the February meeting. We will get started between 9 – 10 am on Saturday Feb 20. We will have a quick business meeting and a demo then we will do some actual turning. Many members will bring their own lathes and the club lathes will be there. It is a good chance to watch turners and do some turning yourself.

All are welcome! Google Middlesex Community College Bedford then Home> Transportation> Parking> Bedford Campus Parking Map

We will be in the Student Center – Parking area “D”.  
From lot D go into student center and go right at the end and then through the cafeteria

---

### Nearby Event **Totally Turning 2016**

**Saturday & Sunday, April 2nd & 3rd, 2016**  
*Saratoga Springs City Center, Saratoga Springs, NY*

2016 Featured Presenters will be Binh Pho, Stuart Batty, Glen Lucas, Hans Weissflog, Jimmy Clewes, Steve Sinner, Derek Weidman, Kurt Hertzog, and Linda Ferber

<http://www.totallyturning.com>

### ART Mentor Program

**The purpose of this program is to provide a resource for members who need a bit of help.**

Whether you're a beginner or a more experienced turner, whether you need an all-day session or 20 minutes worth of pointers, the mentors are here to help you. Feel free to give a mentor a call or approach them at the next meeting.

#### **Mike Souter**

Ipswich, MA • 978-356-4750

#### **Derrick TePaske**

Belmont, MA • 617-489-0169

#### **Dietrich Kulze**

Billerica, MA • 978-663-5241

#### **Ken Lindgren**

Norwood, MA • 781-856-6035

#### **Peter Patalano**

Medford, MA • 781-391-6446

#### **Bobbi Tornheim**

Lexington, MA • 781-862-4359

#### **Andy Osborne**

Norwood, MA • 781-769-6070

#### **Mark Holden**

Tewksbury, MA • 978-335-2675

#### **Ralph F. Rumery**

Beverly, MA • 508-878-5900

---

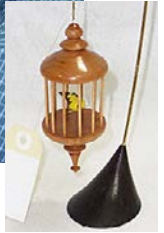
## 2016 Club Demonstration Schedule

February	—	—
March	Gary Bashian	short demo on the Beall finishing system
April	Raph Rumery	his version of a video tracking rig for hollowing
May	Ron Pouliot	hollowing system on a big lathe
June	Steve Reznek	not sure what he will demo yet
July	—	—
August	—	—
September	—	—
October	—	—
November	—	—
December	—	—

If you have a skill, technique or a unique turning that you would like to share with the club please contact Darragh Cosgrave, at a meeting, by phone 617-470-4842 or email: [InternalVP@revolutionary-turners.com](mailto:InternalVP@revolutionary-turners.com)

---

# Show & Tell



## Media Library

Allan Batty hand thread chaising

*Allan Batty*

Elegant finial design

*Cindy Drozda*

Turning boxes

*Richard Raffan*

Turning Projects

*Richard Raffan*

Bowl Turning

*Dell Stubbs*

AAW Presents Skill Building projects

*Mark St. Leger*

Wood turning wizardry

AAW Presents Turn projects from scrap

*Robert Rosand*

Natural Lipped Bowl

*Ken Bullock*

Ken Bullock wood bowls on a budget

*Ken Bullock*

AAW Presents Rude Osolnik

*Rude Osolnik*

Ellsworth Tips tapes 1

*Ellsworth*

Ellsworth Tips 3

*Ellsworth*

Wood turning, a Foundation Course

*Keith Rowley*

Turning wood—Salt and Pepper Mill

*Alan Holtham*

1996 AAW Symposium

1997 AAW Symposium

1998 AAW Symposium Techniques Vol 1

Brent Bosch vessels of Illusion

*Brent Bosch*

Mike Mahoney from the tree to the table

*Mike Mahoney*

Basic Box Ray Keys

*Ray Keys*

Ellsworth Tools for hollow turning

*Ellsworth*

Capsule box Ray Keys

*Ray Keys*

1999 AAW Symposium techniques V1

1998 AAW Symposium 2

*J Richer, J Mascall, R Munro, M Curtis, E Conover*

Fundamentals of sharpening

*Bonnie Klein, John Jordan, Bill Johnston, Alan Lacer*

Son of skew Alan Lacer

*Alan Lacer*

AAW Presents Turn projects from scrap

*Robert Rosand*

Segmented vessels cassinger template

Practice of Wood Turning Disk1

*Mike Darlow*

Practice of Wood Turning Disk2

*Mike Darlow*

Snap lid Box Jeff Levine

*Jeff Levine*

Binh Pho thin wall turning

*Binh Pho*

Binh Pho Surface Design

*Binh Pho*

Projects 4 Everyone 1

*Nick Cook*

Projects 4 Everyone 2

*Nick Cook*

Luke Man ART

*Luke Man*

Turning pens and other small Projects—

Marshfield 2004

AAW presents a turning tradition

*Myron Curtis*

2002 AAW Symposium 1

2002 AAW Symposium 2

2002 AAW Symposium gallery and critique

AAW magazine vol 1 to vol 8 (1993)

AAW magazine vol 9 to vol 16 (2001)

Basic off center turning

*Chris Scott*

Turning outside the box

*Beth Ireland*

Wood turning, Getting Started Right

*Alan Lacer*

Frank Klausz Dovetail a drawer

*Frank Klausz*

Making Rustic Furniture/ reclaiming Planes/ Picture frames

Program ART June 2006

*Michael Hosaluk*

Aesthetics and properties of wood disk 1

*John Jordan*

Aesthetics and properties of wood disk 2

*John Jordan*

Skew Chisel, Sweet Side/ Dark Side

One Tool Wonder Pinkerton Academy

*Graham Oakes*

Slim Line Pen Russ Fairfield

*Russ Fairfield*

A turning tradition

*Ray Husky*

Metal Inlay Techniques Ted Sokolowski

*Ted Sokolowski*

The Art of Hosaluk in Wood Turning Two Disk Set

*Michael Hosaluk*

Turning around the World V1

*Jimmy Clewes*

Turning around the World V2

*Jimmy Clewes*

Turning around the World V3

*Jimmy Clewes*

## Contact Information for 2016 Club Officers

Title	Name	Phone	eMail
President	John Flynn	781-272-5012	President@revolutionary-turners.com
Internal Vice President	Darragh Cosgrave	617-470-4842	InternalVP@revolutionary-turners.com
External Vice President	Mike Souter	978-390-7111	ExternalVP@revolutionary-turners.com
Secretary,Treasurer	Mark Holden	978-335-2675	Secretary@revolutionary-turners.com
Membership Director	Duncan Suss	617-212-5436	Membership@revolutionary-turners.com
Topsfield Coordinator	Ron Pouliot	978-685-4369	Topsfield@revolutionary-turners.com
Club Librarian	Catherine Francis	781-640-7624	Librarian@revolutionary-turners.com
Supplies Coordinator	John Earley	978-922-0168	Supplies@revolutionary-turners.com
Equipment Coordinator	Ralph Rumery	978-922-0319	rrumery@aol.com
Webmaster, Club Photographer	Ken Paciulan	—	Webmaster@revolutionary-turners.com