

ART Newsletter

May 2016 issue

A.R.T. Association of Revolutionary Turners

email: info@revolutionary-turners.com

website: <http://www.revolutionary-turners.com/>



Next Meeting is the
FOURTH Thursday
May 26, 2016
7:00 – 10:00 pm

Demo: Ron Pouliot
Will demonstrate a
hollowing system
on a big lathe.

Arboretum wood will
be at this meeting.

President's Letter

Arboretum: At the next meeting I will, hopefully, be giving out the Arboretum wood. The Arboretum people would like more Arboretum wood pieces in the showcase. Last year some people took wood and did not bring in items to be judged. This year If you take a piece Please turn it into something (Get it turn it...) for the showcase. We will be giving preference to wood pieces made from Arboretum wood when we do the voting for the display.

Patches: Reminder; Each member gets 1 free, and after everyone gets theirs the extras will be available for two dollars.

Club Equipment: Ralph has done a great job restocking the lathe tool boxes. He has asked for help in checking out the club audio video equipment. Someone who knows the ins and outs of digital AV please step forward.

President's Gripe Question of the Month: Last meeting John Early and I were chatting about the Anchor Seal drum. I was thinking about not getting the drum and eliminate it from our club supplies – But I did some research and here is what I discovered: Anchor Seal (AS) is made by UC Coatings out of Buffalo NY A 55 Gallon drum of Classic winterized Anchor Seal is \$363.00. Delivery with a lift gate truck is \$258.00 – Delivery to the tailgate is \$98.00. Classic AS is what we use now, winterized means it has antifreeze mixed in to prevent freezing. UC has a new AS called Anchor Seal 2 (It is supposed to be “environmentally greener” than classic. I was told if you started with Classic then you should stay with it. AS 2 is thinner and meant to be sprayed on in commercial applications. Club cost per gallon with lift gate delivery is a little over \$11.00. Woodcraft currently sells Anchor Seal 2 for \$25.75 a gallon. Question – If we raise the club price to \$15.00 a gal is there enough of a market to bother with the drum?

Think about this for the next meeting.

Turn Safe
John Flynn

Club Officers

John Flynn
President

Darragh Cosgrave
Internal Vice President

Mike Souter
External Vice President

Mark Holden
*Secretary, Treasurer,
Newsletter Editor*

Duncan Suss
Membership Director

Ron Pouliot
Topsfield Coordinator

Catherine Francis
Club Librarian

John Earley
Supplies Coordinator

Ralph Rumery,
Equipment Coordinator

Ken Paciulan
Webmaster, Photographer

Safety First!

- Always wear a face shield !!
- Make sure your tail-stock is LOCKED before turning on the lathe!!!
- Never move the tool rest while the lathe is spinning.
- When you have to chase your lathe around the room, you're turning speed is too high.

AAW | AMERICAN ASSOCIATION
OF WOODTURNERS

Chapter of American Association of Woodturners (AAW)
<http://www.woodturner.org/>

Business Meeting Minutes, April 21, 2016 *taken by Mark Holden, ART Secretary*

7:00 meeting opened.

Attendance approximately 30 and 2 new visitors, Al Scott and Simone Rigden.

Reports

Membership Director: 74 paid members.

Treasurer: **\$4,976 balance** after \$20.15 for a library book, \$1002.22 for replacement of club equipment, and \$127.00 for club patches.

External VP: Mike talked with Stuart Batty and he is available in November and charges \$750 a day +expenses. And if he is visiting in the area at that time he will negotiate a discount for expenses.

Supplies Coordinator: Sales are good. Costs are up.

Equipment Coordinator: All 3 lathes have been refitted with missing/broken parts, total cost was \$1002.22. There are 2 lathes available for member storage/use with a stipulation to deliver/make arrangements to get them to the Topsfield Fair or any other club event.

Librarian: 2 new books have been purchased; The Art of Turned Bowls and Turning Wood both by Richard Raffan.

New Business

Club patches are in. Duncan to give out one to each paid member. Additional patches are \$2 each.

Discussion regarding Stuart Batty ended up with Mike checking if we can get Stuart in on November 12-13. Potential venue MCC. Saturday demo fee ~\$15 with pizza/drinks supplied, and possibly open to other clubs. Sunday hands-on would be limited at MCC by the number of lathes we can produce. Or alternatively we could check into holding it at Woodcraft. All these details/options to be worked out as we get closer.

Motion for the February minutes to be approved as presented in the April newsletter. Seconded & approved.

Duncan will take the old Anchor Seal drum from Pablo. Wood pickup at the Arnold Arboretum will now be May 25th. It was suggested to move the May meeting to the day after so that wood can be distributed. A motion was made to move the May meeting only to the fourth Thursday (May 26th). Seconded & approved.

John asked members to think about suggestions on any tool or such that the club could purchase for group use.

Andrew suggested doing a "group critique" instead of a demo. Discussion followed and September was chosen. 7-"something-ish" meeting adjourned.

Short break followed by show & tell, and Ralph Rumery's presentation of a video tracking rig for hollowing.

New! Monthly Pre-Meeting Learn & Turn

5:00 – 6:45, before the
start of the meeting.

**Woodcraft lathes will be available for
beginner turners and anyone interested
in trying turning with instruction
by experienced members.**

This is open to the general public, so feel free
to invite your friends to come and participate.

**Attention Members! You can now pay
your dues for 2016 online at:**

<https://squareup.com/store/revolutionary-turners>

ART Mentor Program

The purpose of this program is to provide a resource for members who need a bit of help. Whether you're a beginner or a more experienced turner, whether you need an all-day session or 20 minutes worth of pointers, these mentors are here to help you. Feel free to give one a call or approach them at the next meeting.

Mike Souter
Ipswich, MA
978-356-4750

Bobbi Tornheim
Lexington, MA
781-862-4359

Derrick TePaske
Belmont, MA
617-489-0169

Andy Osborne
Norwood, MA
781-769-6070

Ken Lindgren
Norwood, MA
781-856-6035

Mark Holden
Tewksbury, MA
978-335-2675

Peter Patalano
Medford, MA
781-391-6446

Ralph F. Rumery
Beverly, MA
508-878-5900

Nearby Upcoming Events

The Zen of Carving with Miriam Carpenter at Snow Farm

May 22, 2016 9:00 AM Snow Farm: The New England Craft Program
5 Clary Road, Williamsburg, Massachusetts 01096

Students will practice carving as meditation and will be encouraged to explore the natural environment to find inspiration through pattern recognition and structure.

The workshop will include an introduction to the properties of different wood species, and will identify appropriate material for individual projects.

Students will experiment with techniques and tools for carving, shaping, surface design, and finishing.

Final pieces will be small in scale and may be functional or object d'art.

More information: <http://public.snowfarm.org/public/Preview.faces?wrkid=797>

Center for Furniture Craftsmanship

25 Mill Street, Rockport, Maine

the Massachusetts South Shore Woodturners

Introduction to Turning, Stephen Gleasner – June 13-17

<http://www.woodschooll.org/turning/woodturning-fundamentals>

Intermediate Turning, Beth Ireland – June 20-24

<http://www.woodschooll.org/turning/intermediate-turning-course>

Decorative Turned Surfaces, Dixie Biggs – June 27-July 1

<http://www.woodschooll.org/turning/decorative-woodturning>

Each course is \$750



5th AAW National Segmented Symposium

October 27- 30, 2016

at the Boston Marriott, Quincy.

Many nation-wide events can be found
at the AAW website:

http://www.woodturner.org/events/event_list.asp

Another good reason to join AAW!

2016 Club Demonstration Schedule

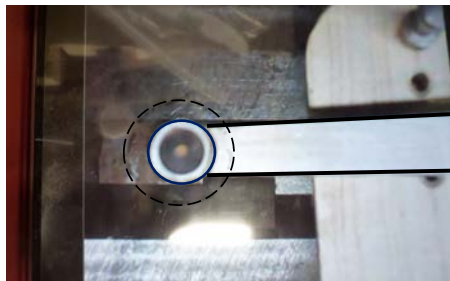
May	Ron Pouliot	hollowing system on a big lathe
June	Steve Reznek	tbd
July	—	—
August	—	—
September	Club Critique	Member work to be presented and discussed
October	Donna Banfield	tbd
November	Stuart Batty	Demo on the 12th with a workshop on the 13th
December	—	—

If you have a skill, technique or a unique turning that you would like to share with the club please contact Darragh Cosgrave, at a meeting, by phone 978-712-8042 or email: InternalVP@revolutionary-turners.com

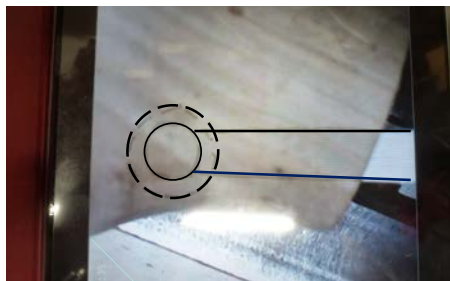
April Demo — Ralph Rumery's version of a video tracking rig for hollowing

Ralph showed us his homemade video tracking hollowing system. The credit for this idea goes to Trent Bosch and his daughter.

Basic tracking concept:

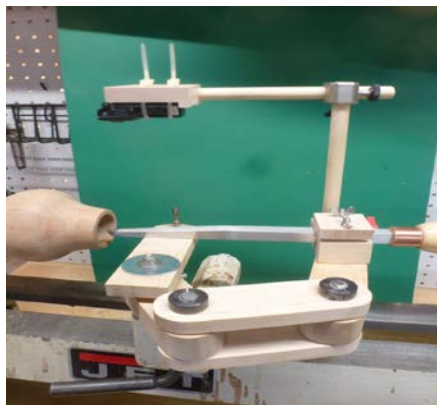


Secure a sheet of clear acetate to the face of the visual display (iPad) onto which you will draw the shape of the tool holder and cutting edge with a black Sharpie or Dry Erase marker.

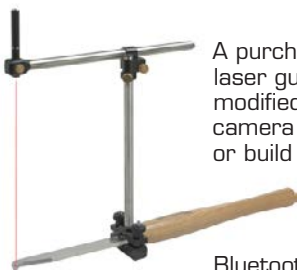


With the camera mounted directly over the end of the tool, the image that is sent wirelessly to the video display will always remain the same. That is, the end of the tool will always be in the same position relative to the camera image.

Below is Ralph's homemade version. Note the camera is directly over (and follows) the cutter.



Any hollowing system can be used as long as the camera is securely attached to follow the tool.



A purchased laser guide can be modified to hold the camera to your tool, or build your own.

Bluetooth cameras are very inexpensive.



Another thank you letter to all who donated to the Empty Bowls fund raiser!



The bowls from the Revolutionary Turners was a huge success. As you can see from the attached photo, we divided them into 5 groupings and sold raffle tickets. The tickets were placed in the large bowl in back of each setting for the desired grouping. We sold \$870 in tickets!

This far exceeded our expectations and was a significant part of the proceeds from the event.

Thank you and the generous wood turners for your wonderful contribution. Hopefully you'll keep us in mind next year!

Warm regards,

Ron Fishman
Resident Service Coordinator
Trinity Management, LLC at Chelsea Square Apartments
and the Brownstone Alliance

April Show & Tell



Show & Tell *continued*



Membership has its privileges! Supplies bought in bulk by the club can \$ave you money.

Standard CA Semi-flexible	1 oz	2 oz	16 oz
Thin	\$4	\$6	\$32
Med-Thin	\$4	\$6	\$32
Medium	\$4	\$6	\$32
Med-Thick	\$4	\$6	\$32
Thick	\$4	\$6	\$32
Colored CA			
Black Medium	\$6	\$11	\$62
Brown Medium	n/a	\$11	\$62
White Med-Thick	\$7	\$12	\$70
Pink Thick	n/a	?	?

Flexible CA 4x stronger bond strength			
Thin	n/a	\$11	\$62
Med-Thick	n/a	\$11	\$62
Brown Thin	n/a	\$11	\$62
Black Med-Thick	n/a	\$11	\$62
Odorless CA			
Very Thin	n/a	\$11	\$80

Pump Spray Accelerator	8 oz.	\$8
Extension Tips	25/bag	\$1.50
Debonder	2 oz.	\$5
Anchor Seal	Gallon	\$10

If you want to ensure that John Earley our *ART Supplies Coordinator* has and brings what you need to the next meeting call 978-922-0168 or email him at Supplies@revolutionary-turners.com

Prices can change and are not guaranteed as listed. Not all items/sizes are in stock. Contact John if you are interested in something not currently in stock.

Media Library

Books

- Wood Turning (The Art of Woodworking)
Time Life Books
- The Fine Art Of Small-Scale Woodturning
William R. Duce
- Fundamentals of Wood Turning
Mike Darlow
- Woodturning Methods
Mike Darlow
- Turning Wooden Jewelry
Judy Ditmer
- Turned-Bowl Design
Richard Raffan
- Creative Woodturning
Dale L. Nish
- Hand or Simple Turning: Principles and Practice
John Jacob Holtzapffel
- Contemporary American Woodworkers
Michael A Stone
- Turning Wood with Richard Raffan
Richard Raffan
- Wood for Woodturners
Mark Baker
- The Craftsman Woodturner
Peter Child Revised by Roy Child
- Taunton's Complete Illustrated Guide to Turning
Richard Raffan
- Curators' Focus Turning in Context
The Wood Turning Center
- WOOD Turning in North America Since 1980
The Wood Turning Center and Yale University
- The Art of the Lathe
Patrick Spielman
- Faceplate Turning Features Projects Practice
Woodturning Magazine
- The Art of Turned Bowls: Designing Spectacular
Bowls with a World- Class Turner
Richard Raffan
- Turning Wood
Richard Raffan
- Woodturning A Designer's Notebook
Ray Key
- DVDs**
- Hand Thread Chasing
Allan Batty
- Elegant Finial Design
Cindy Drozda
- Turning boxes
Richard Raffan
- Turning Projects
Richard Raffan
- Bowl Turning
Dell Stubbs
- AAW Presents Skill Building Projects
Mark St. Leger
- Wood Turning Wizardry
David Springett
- AAW Presents Turn Projects From Scrap
Robert Rosand
- Natural Lipped Bowl
Ken Bullock
- Wood Bowls on a Budget
Ken Bullock
- AAW Presents Rude Osolnik
Rude Osolnik
- Ellsworth Tips 1
Ellsworth
- Ellsworth Tips 3
Ellsworth
- Wood turning, a Foundation Course
Keith Rowley
- Turning Wood—Salt and Pepper Mill
Alan Holtham
- 1996 AAW Symposium
- 1997 AAW Symposium
- 1998 AAW Symposium Techniques Vol 1
- Brent Bosch Vessels of Illusion
Brent Bosch
- Mike Mahoney from the Tree to the Table
Mike Mahoney
- Basic Box
Ray Keys
- Ellsworth Tools for Hollow Turning
Ellsworth
- Capsule Box
Ray Keys
- 1999 AAW Symposium Techniques V1
- 1998 AAW Symposium 2
J Richer, J Mascall, R Munro, M Curtis, E Conover
- Fundamentals of Sharpening
Bonnie Klein, John Jordan, Bill Johnston, Alan Lacer
- Son of Skew
Alan Lacer
- Hand-Crafted Pens - The Basics
Penn State Industries
- Segmented Vessels Cassinger Template
- Practice of Wood Turning Disk1
Mike Darlow
- Practice of Wood Turning Disk2
Mike Darlow
- Snap lid Box
Jeff Levine
- Thin Wall Turning
Binh Pho
- Surface Design
Binh Pho
- Projects 4 Everyone 1
Nick Cook
- Projects 4 Everyone 2
Nick Cook
- Luke Man ART
Luke Man
- Turning Pens and Other Small Projects—Marshfield 2004
- AAW presents a turning tradition
Myron Curtis
- 2002 AAW Symposium 1
- 2002 AAW Symposium 2
- 2002 AAW Symposium Gallery and Critique
- AAW Magazine vol 1 to vol 8 (1993)
- AAW Magazine vol 9 to vol116 (2001)
- Basic Off Center Turning
Chris Scott
- Turning outside the box
Beth Ireland
- Wood Turning, Getting Started Right
Alan Lacer
- Dovetail a Drawer
Frank Klausz
- Making Rustic Furniture/ Reclaiming Planes/
Picture Frames
- Program ART June 2006
Michael Hosaluk
- Aesthetics and Properties of Wood disk 1
John Jordan
- Aesthetics and Properties of Wood disk 2
John Jordan
- Skew Chisel, Sweet Side/ Dark Side
Alan Lacer
- One Tool Wonder Pinkerton Academy
Graham Oakes
- Slim Line Pen Russ Fairfiled
Russ Fairfield
- A Turning Tradition
Ray Husky
- Metal Inlay Techniques Ted Sokolowski
Ted Sokolowski
- The Art of Hosaluk in Wood Turning Two Disk Set
Michael Hosaluk
- Turning around the World V1
Jimmy Clewes
- Turning around the World V2
Jimmy Clewes
- Turning around the World V3
Jimmy Clewes

Contact Information for 2016 Club Officers

Title	Name	Phone	eMail
President	John Flynn	781-272-5012	President@revolutionary-turners.com
Internal Vice President	Darragh Cosgrave	978-712-8042	InternalVP@revolutionary-turners.com
External Vice President	Mike Souter	978-390-7111	ExternalVP@revolutionary-turners.com
Secretary, Treasurer	Mark Holden	978-335-2675	Secretary@revolutionary-turners.com
Membership Director	Duncan Suss	617-212-5436	Membership@revolutionary-turners.com
Topsfield Coordinator	Ron Pouliot	978-685-4369	Topsfield@revolutionary-turners.com
Club Librarian	Catherine Francis	781-640-7624	Librarian@revolutionary-turners.com
Supplies Coordinator	John Earley	978-922-0168	Supplies@revolutionary-turners.com
Equipment Coordinator	Ralph Rumery	978-922-0319	rrumery@aol.com
Webmaster, Club Photographer	Ken Paciulan		Webmaster@revolutionary-turners.com
